



# Title Plan - LT 588141

---

**Survey Number** LT 588141  
**Surveyor Reference** E20448 Rosemerryn S17  
**Surveyor** Nicholas Johan Jagvik  
**Survey Firm** Davie Lovell-Smith Ltd  
**Surveyor Declaration** I Nicholas Johan Jagvik, being a licensed cadastral surveyor, certify that--  
(a) this dataset provided by me and its related survey are accurate, correct and in accordance with the Cadastral Survey Act 2002 and Cadastral Survey Rules 2021; and  
(b) the survey was undertaken by me or under my personal direction.  
Declared on 14 Apr 2023 01:38 PM

---

## Survey Details

**Dataset Description** Lots 586 - 591, 613 - 620, 633 - 637, 659 - 665, 670 - 674, 678 - 682, 876, 877, 890 - 896, 927, 928, 938 - 945, 6000, 6001, 7020 & 8002 being subdivision of Lot 8001 DP 576671

**Status** Approved as to Survey

**Land District** Canterbury **Survey Class** Class A

**Submitted Date** 14/04/2023 **Survey Approval Date** 03/05/2023

**Deposit Date**

---

## Territorial Authorities

Selwyn District

---

## Comprised In

RT 1065054

---

## Created Parcels

Parcels	Parcel Intent	Area	RT Reference
Lot 586 Deposited Plan 588141	Fee Simple Title	0.0669 Ha	1117591
Lot 587 Deposited Plan 588141	Fee Simple Title	0.0621 Ha	1117592
Lot 588 Deposited Plan 588141	Fee Simple Title	0.0615 Ha	1117593
Lot 589 Deposited Plan 588141	Fee Simple Title	0.0614 Ha	1117594
Lot 590 Deposited Plan 588141	Fee Simple Title	0.0614 Ha	1117595
Lot 591 Deposited Plan 588141	Fee Simple Title	0.0614 Ha	1117596
Lot 613 Deposited Plan 588141	Fee Simple Title	0.0634 Ha	1117597
Lot 614 Deposited Plan 588141	Fee Simple Title	0.0642 Ha	1117598
Lot 615 Deposited Plan 588141	Fee Simple Title	0.0676 Ha	1117599
Lot 616 Deposited Plan 588141	Fee Simple Title	0.0632 Ha	1117600
Lot 617 Deposited Plan 588141	Fee Simple Title	0.0627 Ha	1117601
Lot 618 Deposited Plan 588141	Fee Simple Title	0.0713 Ha	1117602
Lot 619 Deposited Plan 588141	Fee Simple Title	0.0763 Ha	1117603
Lot 620 Deposited Plan 588141	Fee Simple Title	0.0665 Ha	1117604
Lot 633 Deposited Plan 588141	Fee Simple Title	0.0683 Ha	1117605
Lot 634 Deposited Plan 588141	Fee Simple Title	0.0683 Ha	1117606
Lot 635 Deposited Plan 588141	Fee Simple Title	0.0632 Ha	1117607
Lot 636 Deposited Plan 588141	Fee Simple Title	0.0636 Ha	1117608
Lot 637 Deposited Plan 588141	Fee Simple Title	0.0635 Ha	1117609
Lot 659 Deposited Plan 588141	Fee Simple Title	0.1016 Ha	1117610

# Title Plan - LT 588141

---

## Created Parcels

Parcels	Parcel Intent	Area	RT Reference
Lot 660 Deposited Plan 588141	Fee Simple Title	0.1015 Ha	1117611
Lot 661 Deposited Plan 588141	Fee Simple Title	0.1015 Ha	1117612
Lot 662 Deposited Plan 588141	Fee Simple Title	0.1015 Ha	1117613
Lot 663 Deposited Plan 588141	Fee Simple Title	0.1000 Ha	1117614
Lot 664 Deposited Plan 588141	Fee Simple Title	0.0880 Ha	1117615
Lot 665 Deposited Plan 588141	Fee Simple Title	0.1120 Ha	1117616
Lot 670 Deposited Plan 588141	Fee Simple Title	0.0613 Ha	1117617
Lot 671 Deposited Plan 588141	Fee Simple Title	0.0642 Ha	1117618
Lot 672 Deposited Plan 588141	Fee Simple Title	0.0663 Ha	1117619
Lot 673 Deposited Plan 588141	Fee Simple Title	0.0678 Ha	1117620
Lot 674 Deposited Plan 588141	Fee Simple Title	0.0650 Ha	1117621
Lot 678 Deposited Plan 588141	Fee Simple Title	0.0576 Ha	1117622
Lot 679 Deposited Plan 588141	Fee Simple Title	0.0608 Ha	1117623
Lot 680 Deposited Plan 588141	Fee Simple Title	0.0608 Ha	1117624
Lot 681 Deposited Plan 588141	Fee Simple Title	0.0608 Ha	1117625
Lot 682 Deposited Plan 588141	Fee Simple Title	0.0608 Ha	1117626
Lot 876 Deposited Plan 588141	Fee Simple Title	0.0725 Ha	1117627
Lot 877 Deposited Plan 588141	Fee Simple Title	0.0664 Ha	1117628
Lot 890 Deposited Plan 588141	Fee Simple Title	0.0825 Ha	1117629
Lot 891 Deposited Plan 588141	Fee Simple Title	0.0631 Ha	1117630
Lot 892 Deposited Plan 588141	Fee Simple Title	0.0623 Ha	1117631
Lot 893 Deposited Plan 588141	Fee Simple Title	0.0877 Ha	1117632
Lot 894 Deposited Plan 588141	Fee Simple Title	0.0696 Ha	1117633
Lot 895 Deposited Plan 588141	Fee Simple Title	0.0679 Ha	1117634
Lot 896 Deposited Plan 588141	Fee Simple Title	0.0655 Ha	1117635
Lot 927 Deposited Plan 588141	Fee Simple Title	0.0700 Ha	1117636
Lot 928 Deposited Plan 588141	Fee Simple Title	0.0632 Ha	1117637
Lot 938 Deposited Plan 588141	Fee Simple Title	0.0602 Ha	1117638
Lot 939 Deposited Plan 588141	Fee Simple Title	0.0592 Ha	1117639
Lot 940 Deposited Plan 588141	Fee Simple Title	0.0600 Ha	1117640
Lot 941 Deposited Plan 588141	Fee Simple Title	0.0600 Ha	1117641
Lot 942 Deposited Plan 588141	Fee Simple Title	0.0600 Ha	1117642
Lot 943 Deposited Plan 588141	Fee Simple Title	0.0600 Ha	1117643
Lot 944 Deposited Plan 588141	Fee Simple Title	0.0600 Ha	1117644
Lot 945 Deposited Plan 588141	Fee Simple Title	0.0600 Ha	1117645
Lot 6000 Deposited Plan 588141	Fee Simple Title	0.0005 Ha	1117646
Lot 6001 Deposited Plan 588141	Fee Simple Title	0.0005 Ha	1117647
Lot 7020 Deposited Plan 588141	Vesting on Deposit for Road	1.1909 Ha	
Lot 8002 Deposited Plan 588141	Fee Simple Title	14.2718 Ha	1117648
Area A Deposited Plan 588141	Easement		
Area B Deposited Plan 588141	Easement		
Area C Deposited Plan 588141	Easement		
Area D Deposited Plan 588141	Easement		

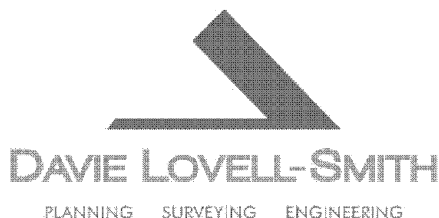


# Title Plan - LT 588141

---

## Created Parcels

Parcels	Parcel Intent	Area	RT Reference
Area E Deposited Plan 588141	Easement		
Area F Deposited Plan 588141	Easement		
Area G Deposited Plan 588141	Easement		
Area H Deposited Plan 588141	Easement		
Area I Deposited Plan 588141	Easement		
Area J Deposited Plan 588141	Easement		
Area K Deposited Plan 588141	Easement		
<b>Total Area</b>		<hr/> 19.2821 Ha	



Davie Lovell-Smith Ltd  
 116 Wrights Road, Addington  
 PO Box 679, Christchurch 8140  
 New Zealand  
 Telephone (03) 379 0793  
 E-mail: office@dls.co.nz

Surveyor Reference: E20448 Rosemerryn S17

DP 588141

MEMORANDUM OF EASEMENTS

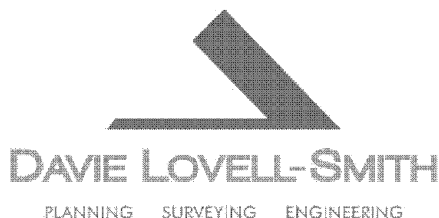
Purpose	Servient Tenement (Burdened Land)	Shown	Dominant Tenement (Benefited Land)
Right of way, rights to drain water and sewage and rights to convey water, electricity and telecommunications	Lot 614	A	Lot 615
	Lot 615	B	Lot 614
	Lot 618	H & I	Lot 619
	Lot 619	J & K	Lot 618
Right to convey electricity	Lot 618	H	Lot 617
	Lot 619	J	

MEMORANDUM OF EASEMENTS IN GROSS

Purpose	Servient Tenement (Burdened Land)	Shown	Grantee
Right to convey water in gross and right to drain sewage in gross	Lot 8002	C & G	Selwyn District Council

SCHEDULE OF EASEMENTS IN GROSS

Purpose	Servient Tenement (Burdened Land)	Shown	Grantee
Right to convey telecommunications in gross	Lot 614	A	Enable Networks Limited
	Lot 615	B	
	Lot 618	H & I	
	Lot 619	J & K	



Davie Lovell-Smith Ltd  
 116 Wrights Road, Addington  
 PO Box 679, Christchurch 8140  
 New Zealand  
 Telephone (03) 379 0793  
 E-mail: office@dls.co.nz

Surveyor Reference: E20448 Rosemerryn S17

DP 588141

SCHEDULE OF EXISTING EASEMENTS

Purpose	Servient Tenement (Burdened Land)	Shown	Document
Right to convey electricity in gross	Lot 8002	F	EI 12223845.7
Right to convey telecommunications in gross	Lot 8002	F	EI 12223845.8
Right to convey water in gross, right to drain water in gross and right to drain sewage in gross	Lot 8002	F	EI 12223845.6
Right to drain sewage in gross	Lot 8002	D & E	EI 12407218.14
Right to convey water in gross	Lot 8002	D	EI 12407218.14

SCHEDULE OF EXISTING EASEMENTS TO BE SURRENDERED

Purpose	Servient Tenement (Burdened Land)	Shown	Document
Right to drain water in gross	Lot 8001 DP 576671	Marked G on DP 576671	EI 12223845.6
Right to drain sewage in gross	Lot 8001 DP 576671	Marked G & H on DP 576671	EI 12223845.6
Right to drain sewage in gross	Lot 8001 DP 576671	Marked I on DP 576671	EI 11963497.11

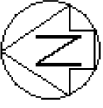




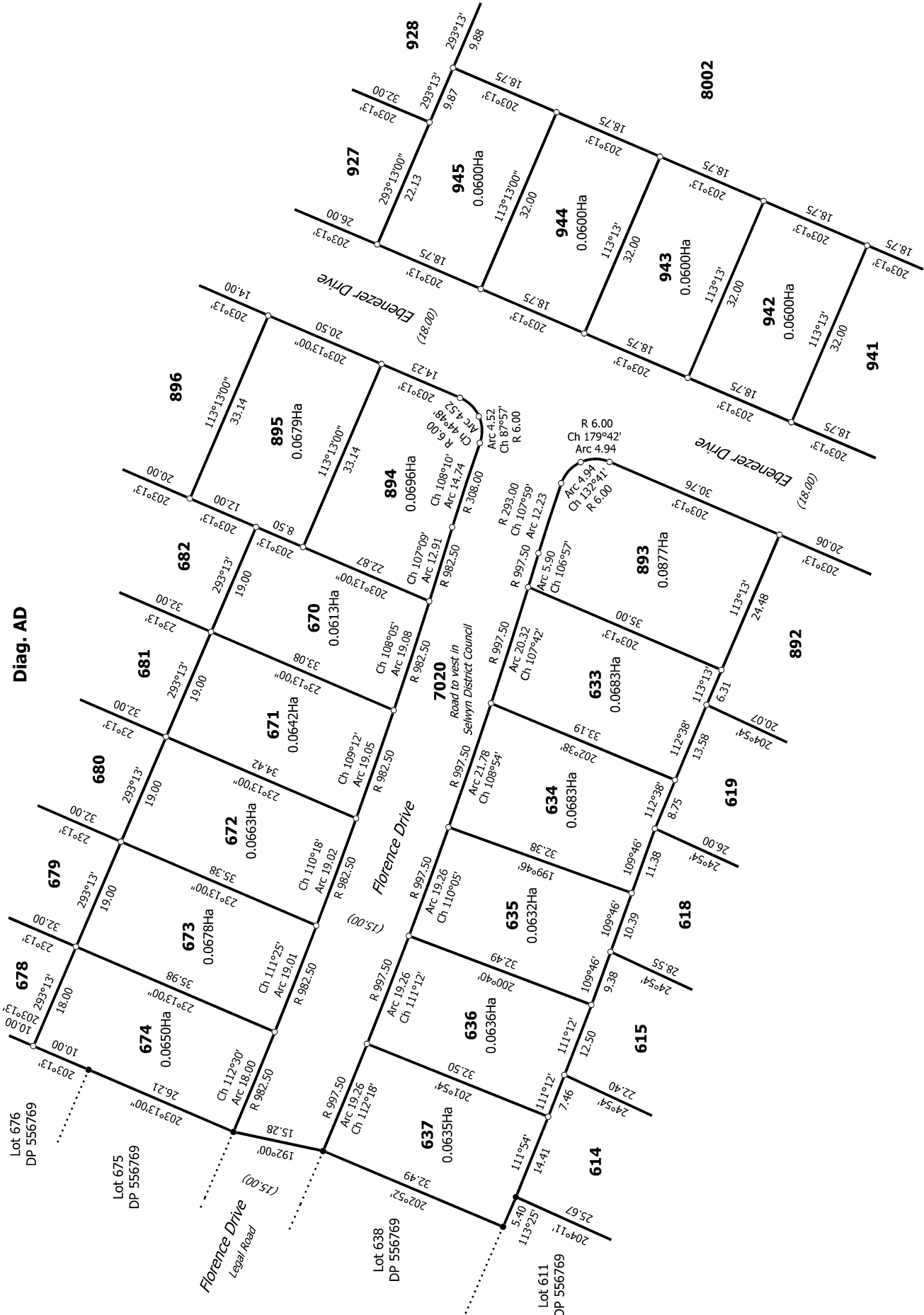








Diag. AD



T 5/8

Land District: Canterbury

Digitally Generated Plan

Generated on: 03/05/2023 12:28pm Page 10 of 13

Lots 586 - 591, 613 - 620, 633 - 637, 659 - 665, 670 - 674, 678 - 682, 876, 877, 890 - 896, 927, 928, 938 - 945, 6000, 6001, 7020 & 8002 being subdivision of 1 of 8001 DP 576671

Surveyor: Nicholas Johan Jagvirk  
Firm: Davie Lovell-Smith Ltd

Title Plan  
LT 588141  
Approved on: 3/05/2023





